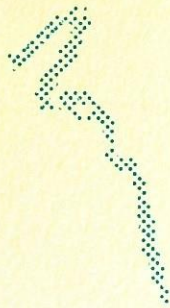


# NOT TOO BIG SMALL THAT'S AIR SIZE!

The AIR is our latest design. I have contributed to making the AIR, which is a course-racing board. Competing in course-racing myself I know what qualities and shapes are necessary for World Cup-performance. Course-racing in the World Cup requires traditional sailing skills; The fine shape of the AIR with the long waterline gives it an incredible upwind performance. The



shape of the hull – negatively double concave in the bow, changing gradually to concave – forces the hull to lie high on the water which increases the speed. The AIR is a fantastically manoeuvrable board which allows me to change course quickly without any loss of speed. The shape of the board makes it suitable for both rough and smooth waters. As you understand this is a board for those who compete, and also for those who only want to have fun.

The AIR is the board for those who want to sail in all windconditions.



# NOT TOO



**A.I.R. Hull of course-racing shape.**

**Mtrl: ..... UNITENE**

**Length: ..... 360 cm**

**Breadth: ..... 61 cm**

**Volume: .... 175 litres**

**Weight: ..... 18 kg**

**One foot off: ..... 35 cm**

**Shape: Double concave**

**Daggerboard: .....**

**..... 62 cm retractable**

**Maststep: ..... Adjustable**

**Mast: ..... 480 cm vinylester**

**Boom: .....**

**..... 235 cm vulcanized rubber**

**Sail: ..... 6,0 m<sup>2</sup> Neil Pryde**

**Fin: ..... 32 cm polycarbonate**

**Footstraps: 6 with bayonet joint**

**A.I.R. is also available as a pure racingboard equipped with: 62 cm retracting aluminium daggerboard,**

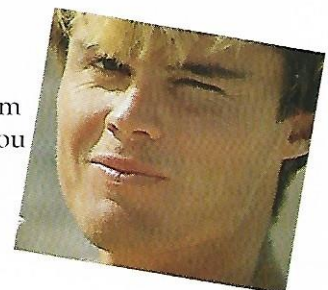
**Fin racing aluminium, Maststep – masttracker,**

**Sail 6,5 m<sup>2</sup> North, fully battened.**

**Shape: Guy Lilljegen**

**JOHAN SALÉN**

competes for the SURFPARTNER team in the World Cup. You will have heard of his successes with the AIR.



5  
'8  
E  
N  
I  
T  
O  
H

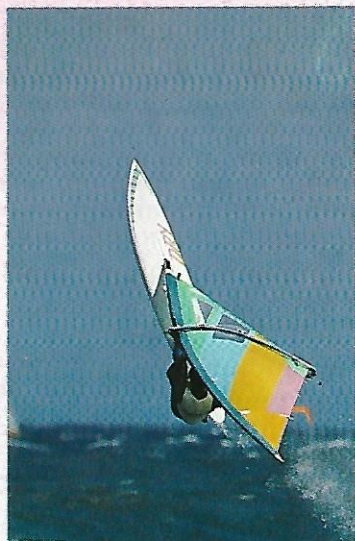
# DRY-FULL CONTROL!



The DRY is our slalom board. Slalom is one of the disciplines in the World Cup series. We compete in pairs and the winner in every heat continues to the next one. When you want to go around the course as fast as possible you've got to have a fast board which also allows you to make quick manoeuvres. This is why we made the DRY with its broadest part at the centre of its length, allowing maximum manoeuvrability. The stern is a roundtail which is a tremendous help in radical turns.

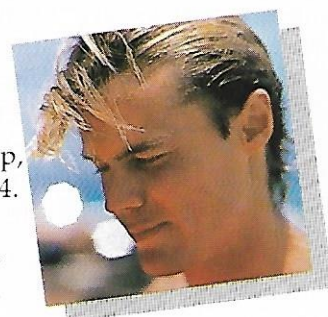
The hull with its double concave channels provides direct air cushion effect even before the board starts to plane.

The results prove that the DRY is a very good racing board! Even if you do not compete you can have a lot of fun with a DRY. You'll make a figure eight just like that!



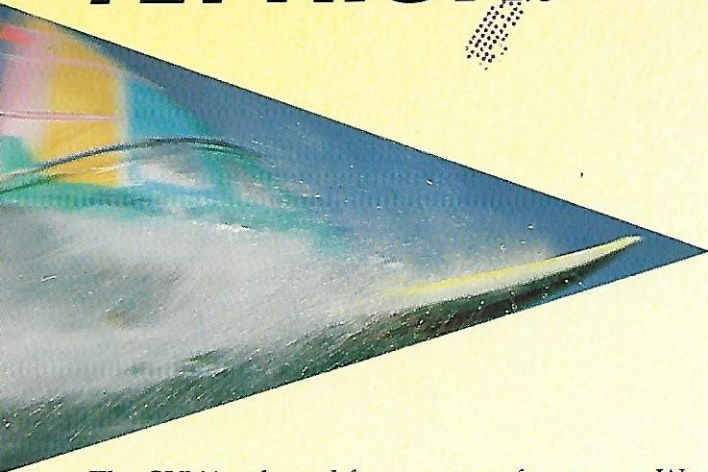
**D.R.Y. Hull of slalom shape.**  
Material: .....  
..... **UNITENE**  
Length: ..... 285 cm  
Breadth: ..... 60 cm  
Volume: ... 110 litres  
Weight: ..... 12 kg  
One foot off: ..... 34 cm  
Shape: .. Double concave  
Maststep: .... Adjustable  
Mast: .... 480 cm vinylester  
Boom: .....  
.... 215 cm vulcanized rubber  
Sail: ..... 5,5 m<sup>2</sup> Neil Pryde  
Fin: ..... 32 cm polycarbonat  
Footstraps: ..... 4 with bayonet joint  
D.R.Y. is also available as a pure racing board equipped with 5,5 m<sup>2</sup> North, fully battened sail.  
Shape: TM-Proline

JOHAN SALÉN  
3:rd in World Cup,  
slalom Hawaii -84.  
Member of the  
SURF PARTNER  
team.





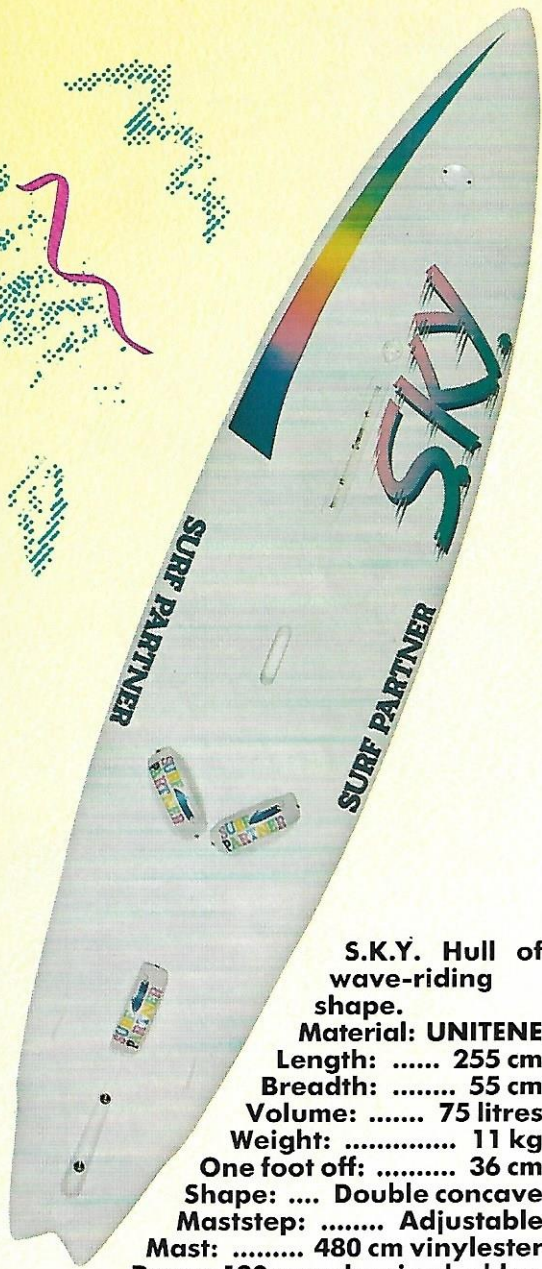
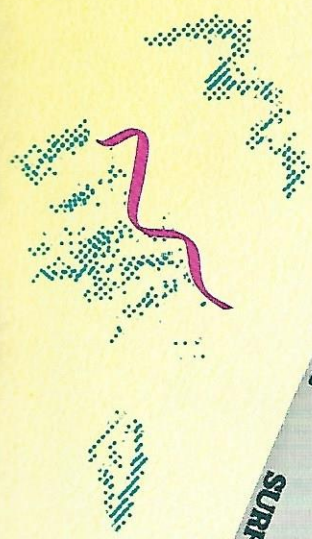
# TRY SKY AND FLY HIGH!



The SKY is a board for wave performance. Wave is one part of the World Cup disciplines and it is a tough one, wearing for both equipment and sailors. In order to get the right shape for World Cup performance, I have contributed myself to the development of the SKY. In this tough event it's not unusual for boards to be broken and that is why we have developed the SKY in durable UNITENE material.

This special sandwich construction permits me to sail even in the strongest winds. It's then boardsailing becomes wave surfing with high jumps and radical gybes. We guarantee therefore that you will not break a board made of UNITENE.

The SKY is a sinker so you must master the waterstarts. The hull is flat, changing slightly to positive double concave in the stern, which maintains the pressure under the board. The stern is a fishtail with wingers which keep the board steady in sharp turns. In order to get a maximum of acceleration the rocker of the board ends 90 cm from the stern. You will notice this immediately, as it's the speed that decides the height and length of the jumps.



**S.K.Y. Hull of wave-riding shape.**  
Material: UNITENE  
Length: ..... 255 cm  
Breadth: ..... 55 cm  
Volume: ..... 75 litres  
Weight: ..... 11 kg  
One foot off: ..... 36 cm  
Shape: .... Double concave  
Maststep: ..... Adjustable  
Mast: ..... 480 cm vinylester  
Boom: 190 cm vulcanized rubber  
Sail: ..... 5,0 m<sup>2</sup> Neil Pryde  
Fin: ..... 28 cm polycarbonate  
Footstraps: ..... 3 with bayonet joint.  
S.K.Y. is also available as a pure racing board equipped with 5.0 m<sup>2</sup> North, fully battened sail.



GÖRAN GÖRANSSON  
Swedish Champion in wave performance.

5  
8  
E  
N  
I  
T  
O  
H

# ACCESSORIES



*Adjustable footstraps*



*Mastpad*

*Profile battens P.E.H.*



*Mast tracker*



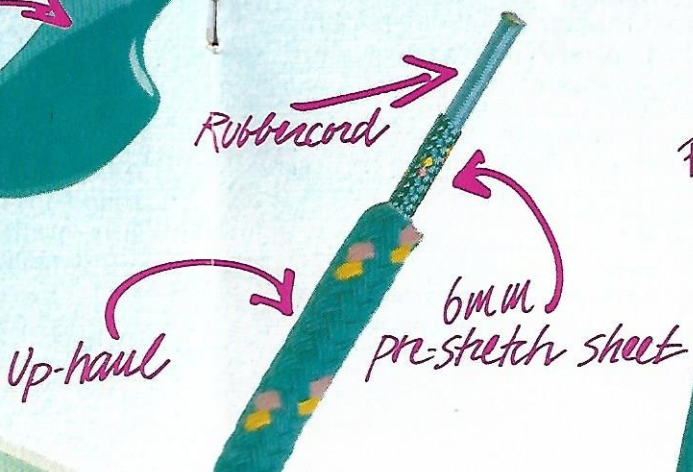
*Mastfoot*



*Footfin*



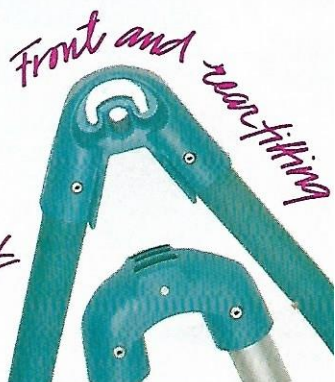
*Sailbag*



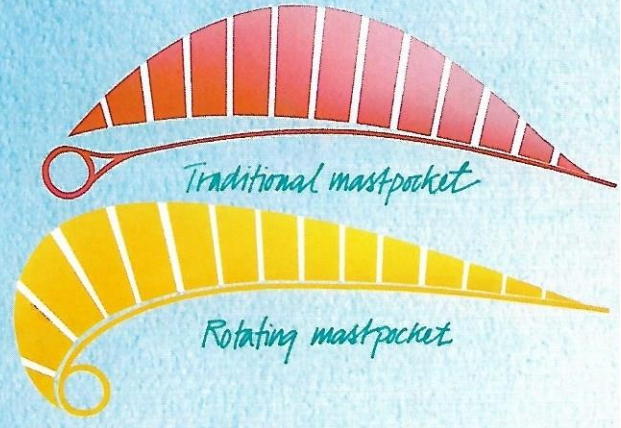
*Rubbercord*

*Up-haul*

*6mm pre-stretch sheet*



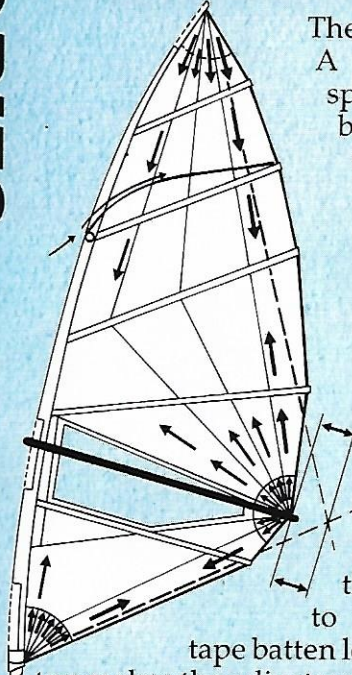
*Front and rear fitting*



*Traditional mastpocket*

*Rotating mastpocket*

## SAIL COLLECTION -85



The sail provides the power. A poor sail means poor speed however good the board is. The cut of the sail is important. The new cut of the sail and a short boom give you a rig which is easy to manoeuvre in both light and strong winds. The new rig makes it easier to water- and beachstart, and with more power. Sail trim is essential. We have put strong handles on the clew and the foot of the sail, to make it easy to trim. Adjustable Velcro tape batten locks for the battens in the top makes the adjustment easy and exact.

# PAL A REAL PARTNER!

The PAL is the best choice if you boardsail for sheer pleasure. The PAL is our board for course-racing and is just as fun in light or strong winds (or if you are a beginner).

The long waterline gives the board fine qualities in light winds and the volume (245 litres) makes it stable. The PAL has a fully retractable daggerboard and a slightly v-shaped hull changing to double concave. Here you've got the answer to why it's so easy to sail even upwind. You can



also sail the PAL as a funboard, i.e. manoeuvre the board with your feet instead of the sail. It's the shape of the board that makes it easy to manoeuvre and the v-shaped hull that gives the speed.

PAL is a board with which you will have a lot of fun. Ingemar Stenmark knows why – "It doesn't matter how it's blowing, you can always sail the PAL". We think that this says a great deal about a board that suits everyone.



## P.A.L. Hull of course-racing shape

Material: **UNITENE**

Length: ..... 375 cm

Breadth: ..... 69 cm

Volume: .... 245 litres

Weight: ..... 23 kg

One foot off: ..... 49 cm

Shape: Double concave

Daggerboard: .....

..... 62 cm retractable.

Maststep: ... Aluminium peg

Mast: ..... 480 cm vinylster

Boom: .....

..... 235 cm vulcanized rubber.

Sail: ..... 6,0 m<sup>2</sup> Neil Pryde

Fin: ..... 28 cm polycarbonate

Footstraps: .... Prepared for 6 footstraps with bayonet joint.

Shape: Guy Lilljegen



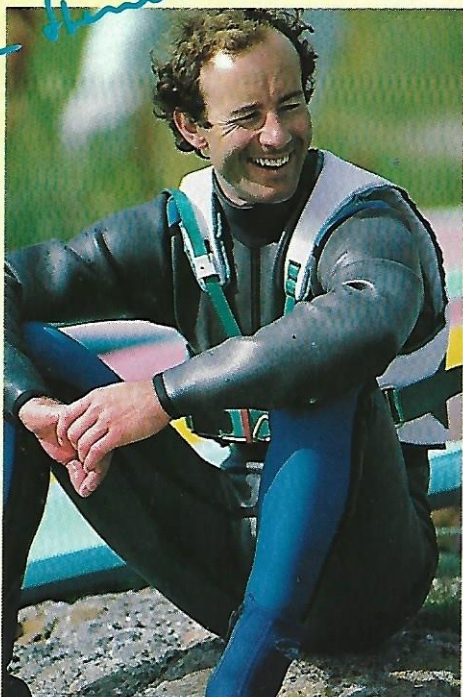
5  
8  
E  
N  
L  
T  
O  
H

# RAY-**REAL GOOD SAILING!**

The RAY is for advanced funboard sailing. The board for those who want the most from their boardsailing. The RAY has - daggerboard, mast-tracker, pin-tail, and wingers. The low volume (140 litres) makes it sail like an extreme funboard. In the Swedish magazine - Surf Sport - the test result said, "RAY gives a feeling just as impulsive and just as good as a 3,30 m board! Furthermore RAY is a well equipped board with fine sailing-abilities at a very good price." Already at 5-6 meters/second you'll feel that the RAY has a lot to give. The shape of the hull - a v-shape gradually changing to double concave - gives an air cushion effect at high speeds. The RAY-board is equipped with a fully retractable daggerboard, which enables you to sail upwind. The RAY is more than an ordinary funboard!

*Lyenna*

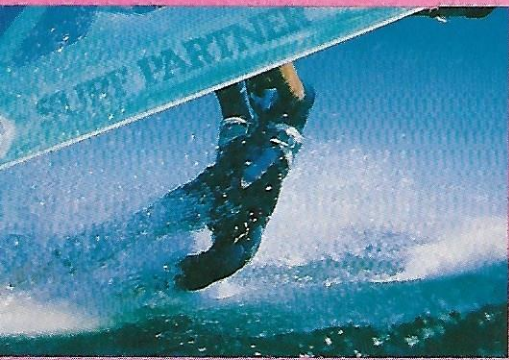
"When it's blowing I choose the RAY".



**R.A.Y. Hull of slalom shape.**  
**Material: UNITENE**  
 Length: ..... 340 cm  
 Breadth: ..... 61 cm  
 Volume: ..... 140 litres  
 Weight: ..... 17 kg  
 One foot off: ..... 33 cm  
 Shape: ..... Double concave  
 Daggerboard: .....  
 ..... 52 cm retractable.  
 Maststep: ..... Adjustable  
 Mast: ..... 480 cm vinyl ester  
 Boom: ..... 245 cm vulcanized rubber  
 Sail: ..... 6,3 m<sup>2</sup> Neil Pryde  
 Fin: ..... 28 cm polycarbonate  
 Footstraps: ..... 6 with bayonet joint.



5  
8  
E  
N  
I  
T  
O  
H



# WET - BIG IN ACTION SMALL IN SIZE

The WET is the board for those who want to have fun! The WET is not as exacting as a sinker but the speed, the high jumps and the radical turns are there. WET is shaped and developed by Larry Smith (who designs boards for us in Hawaii) and is not a board for the inexperienced. In the right winds the WET makes about 20 knots - imagine the jumps! The hull is flat with a light v-shape in the rear, which gives you a board easy to manoeuvre on a beam reach and in marginal conditions. The stern is a double wingered swallow-tail so you can turn the WET on the spot. "Three fun drive" keeps the board steady in thigh turns.



**W.E.T. Hull of wave-riding shape.**  
 Material: ..... UNITENE  
 Length: ..... 280 cm  
 Breadth: ..... 58 cm  
 Volume: ..... 90 litres  
 Weight: ..... 12 kg  
 One foot off: ..... 32 cm  
 Maststep: ..... Adjustable  
 Mast: ..... 480 cm vinylester  
 Boom: ..... 190 cm vulcanized rubber  
 Sail: ..... 5,0 m<sup>2</sup> Neil Pryde  
 Fin: 1 and 2 side-fins in polycarbonate  
 Footstraps: ..... 3 with bayonet joint  
 Shape: Larry Smith, Hawaii

LARRY SMITH, Hawaii, tests all our boards and equipment at extreme conditions in Hawaii. His seal of approval is an extra guarantee for both you and us.



H O T L I N E '8 5

# UNITENE

UNITENE is a sandwich-construction which makes stiff and durable boards. GFCS-fibres.

Provides optimum adherence and increase the lifetime and stiffness. PURS-nucleus. A specially created light weight foam.

PEHD-surface. UV-resistant. High Density with a combination of stiffness, hardness and toughness which yields the best sailing abilities.



## SURF PARTNER COMPETES WORLD WIDE



BMW/SURF PARTNER FUNBOARD TEAM

# BOARDGUIDE

	Allround/Fun	Fun/Extreme	Regatta/Race
<b>A.I.R.</b>	0-10	0-10	0-10
<b>D.R.Y.</b>	0-10	0-10	0-10
<b>S.K.Y.</b>	0-10	0-10	0-10
<b>P.A.L.</b>	0-10	0-10	0-10
<b>R.A.Y.</b>	0-10	0-10	0-10
<b>W.E.T.</b>	0-10	0-10	0-10
Wind m/s	0 2 4 6 8 10 12 14 20 30		

# EXTRA



Hot lines

5  
'8  
E  
N  
I  
T  
L  
O  
H